

SWITCH DISCONNECTOR WITH BS FUSES C1-C3  
 IU=800A,  
 UE=690V, 3-POLE



Similar to image

**General technical details:**

<b>product brand name</b>		SETRON
<b>product designation</b>		Switch Disconnecter with Fuses 3KL
<b>Number of poles</b>		3
<b>Installation size of fuse-link</b>		Form C1-C3
<b>Installation size of disconnecting link</b>		Form C1-C3
<b>Acceptability for application</b>		
<ul style="list-style-type: none"> <li>• main switch</li> <li>• switch disconnecter</li> <li>• emergency stop switch</li> <li>• safety cut-out switch</li> <li>• maintenance/repair switch</li> </ul>		<p>Yes</p> <p>Yes</p> <p>No</p> <p>Yes</p> <p>Yes</p>
<b>Product extension</b>		
<ul style="list-style-type: none"> <li>• optional / motor drive</li> <li>• optional / voltage trigger</li> </ul>		<p>No</p> <p>No</p>
<b>Design of the operating mechanism</b>		manual operating mechanism
<b>Product equipment / interlock</b>		Yes
<b>Type from device</b>		fixed mounting
<b>type of voltage</b>		AC/DC

<b>Continuous current / rated value</b>	A	800
<b>Breaking capacity limit short-circuit current (I<sub>cu</sub>) / at 400 V / rated value</b>		
• optional / interlock		Yes
• auxiliary switch		Yes
<b>Active power loss</b>		
• maximum	W	225
• per conductor / typical	W	75
<b>Insulation voltage / rated value</b>	V	1,000
<b>Impulse voltage resistance / rated value</b>	V	8,000
<b>Item designation</b>		
• according to DIN EN 61346-2		Q
• according to DIN 40719 extendable after IEC 204-2 / according to IEC 750		Q
<b>Fuse system</b>		fuses according to BS 88

### Main circuit:



<b>Design of the electrical connection</b>		
• for main current circuit		flat connector
<b>Number of poles / for main current circuit</b>		3
<b>Operating current</b>		
• at AC-21		
• at 500 V / rated value	A	800
• at 690 V / rated value	A	800
• rated value	A	800
• at AC-22 A		
• at 400 V / rated value	A	800
• at 500 V / rated value	A	800
• at 690 V / rated value	A	800
• at AC-23 A		
• at 400 V / rated value	A	800
• at 500 V / rated value	A	800
• at 690 V / rated value	A	800
• at AC-3 / at 400 V		
• rated value	A	800
• at DC-23 A		
• at 400 V / rated value	A	630
<b>Service power</b>		
• at AC-23 A		
• at 400 V / at 50/60 Hz / rated value	W	400,000
• at 500 V / at 50/60 Hz / rated value	W	400,000

• at 690 V / at 50/60 Hz / rated value	W	500,000
<b>Operating voltage / for DC / rated value</b>	V	440
<b>Operating voltage / at 50/60 Hz / for AC / rated value</b>	V	690

Auxiliary circuit:		
<b>Number of NC contacts / for auxiliary contacts</b>		0
<b>Number of NO contacts / for auxiliary contacts</b>		0
<b>Number of change-over switches / for auxiliary contacts</b>		0

Installation/mounting/dimensions:		
<b>mounting position</b>		any
<b>Protection against electrical shock</b>		finger-safe
<b>Design of the load switch</b> • Strip form		No
<b>Type of the driving mechanism</b> • motor drive		No
<b>Type of mounting</b> • Rail installation • front mounting with central fixation • front mounting with 4-hole fixation		surface mounting and installation No No No
<b>Width</b>	mm	345
<b>Height</b>	mm	270
<b>Depth</b>	mm	240

Ambient conditions:		
<b>Ambient temperature</b> • during operating • during storage	°C	-25 ... +55 -50 ... +80
<b>Protection class IP</b>		IP00
<b>Verification of suitability</b>		CE

Certificates/approvals:				
General Product Approval	Test Certificates	other		
 GOST	 UL	<a href="#">Special Test Certificate</a>	<a href="#">Declaration of Conformity</a>	<a href="#">Environmental Confirmations</a>

**Further information:**  
**Information- and Downloadcenter (Catalogs, Brochures,...)**  
<http://www.siemens.com/lowvoltage/catalogs>

---

**Industry Mall (Online ordering system)**

<http://www.siemens.com/lowvoltage/mall>

---

**Service&Support (Manuals, Certificates, Characteristics, FAQs,...)**

<http://support.automation.siemens.com/WW/view/en/3KL6230-1AG00/all>

---

**Image database (product images, 2D dimension drawings, 3D models, device circuit diagrams, ...)**

[http://www.automation.siemens.com/bilddb/cax\\_en.aspx?mlfb=3KL6230-1AG00](http://www.automation.siemens.com/bilddb/cax_en.aspx?mlfb=3KL6230-1AG00)

---

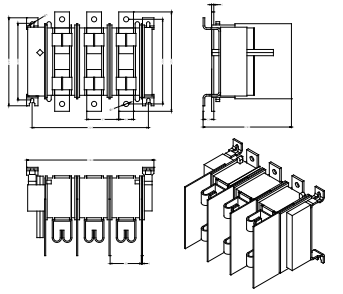
**CAX-Online-Generator**

<http://www.siemens.com/cax>

---

**Tender specifications**

[Datanorm](#) [GAEB81](#) [GAEB83](#) [RTF](#) [TXT](#)



**last change:**

Nov 5, 2012