



FUSE-SWITCH-DISCONNECTOR I = 160 A,  
 U = 690 V,  
 FOR SURFACE MOUNT. AND INST.,  
 SIGUT BOX TERMINAL, FUSE SIZE NH00,

Similar to image

**General technical details:**

<b>Continuous current / rated value</b>	A	160
<b>Operating current / at AC-21 / rated value</b>	A	160
<b>Operating voltage</b>		
• for DC / rated value	V	220
• at 50/60 Hz / for AC / rated value	V	690
<b>type of voltage</b>		AC/DC
<b>Number of poles</b>		3
<b>Number of NC contacts / for auxiliary contacts</b>		0
<b>Number of NO contacts / for auxiliary contacts</b>		0
<b>Number of change-over switches / for auxiliary contacts</b>		0
<b>Acceptability for application</b>		
• emergency stop switch		No
• safety cut-out switch		Yes
<b>Active power loss / maximum</b>	W	10
<b>Breaking capacity limit short-circuit current (Icu) / at 400 V / rated value</b>	kA	0.8
<b>Item designation</b>		
• according to DIN EN 61346-2		Q

- according to DIN 40719 extendable after IEC 204-2 / according to IEC 750

Q

### Mechanical design:

#### Design of the load switch

- Strip form

No

#### Type of mounting

floor mounting

#### Design of the electrical connection

- for main current circuit

box terminals

#### Fuse system

LV HRC fuse

#### Installation size of fuse-link

00 and 000

#### Installation size of disconnecting link

0

#### Width

mm

108

#### Height

mm

170

#### Depth

mm

81.5

### Ambient conditions:

#### Ambient temperature

- during storage
- during operating

°C

-50 ... +80

°C

-25 ... +55

#### Protection class IP

IP00

### Certificates/approvals:

#### General Product Approval

#### Declaration of Conformity

#### Test Certificates



CCC



GOST



UL



EG-Konf.

[Special Test Certificate](#)

#### other

[Confirmation](#)

[Declaration of Conformity](#)

[other](#)

### Further information:

#### Information- and Downloadcenter (Catalogs, Brochures,...)

<http://www.siemens.com/lowvoltage/catalogs>

#### Industry Mall (Online ordering system)

<http://www.siemens.com/lowvoltage/mall>

#### Service&Support (Manuals, Certificates, Characteristics, FAQs,...)

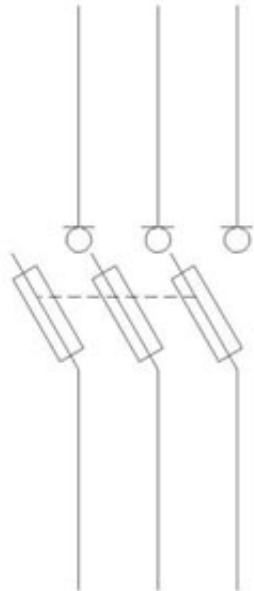
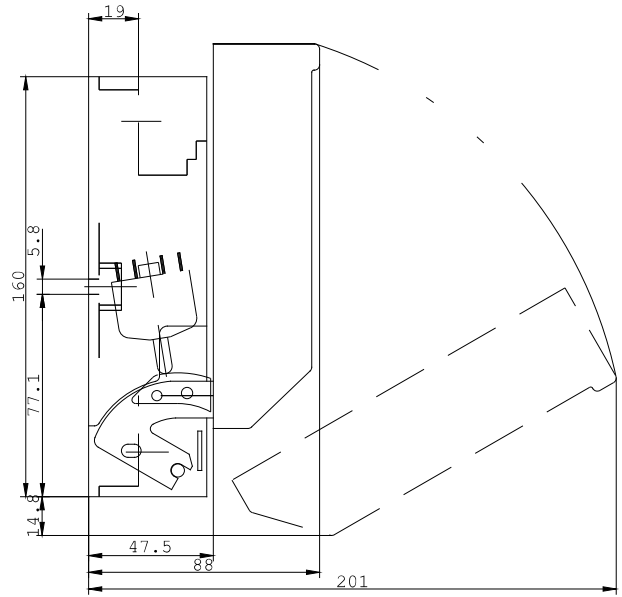
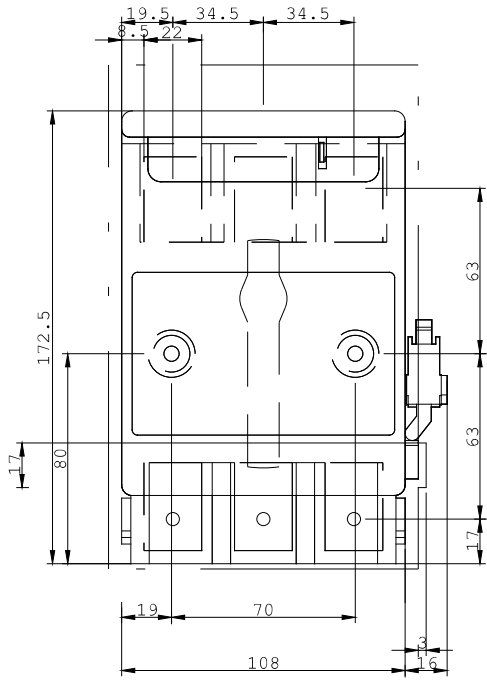
<http://support.automation.siemens.com/WW/view/en/3NP4070-0CH01/all>

#### Image database (product images, 2D dimension drawings, 3D models, device circuit diagrams, ...)

[http://www.automation.siemens.com/bilddb/cax\\_en.aspx?mlfb=3NP4070-0CH01](http://www.automation.siemens.com/bilddb/cax_en.aspx?mlfb=3NP4070-0CH01)

#### CAX-Online-Generator

<http://www.siemens.com/cax>



last change:

Nov 2, 2012