



FUSE-SWITCH-DISCONNECTOR SIGUT CONNECT.
 ROTATABLE/SIZE,
 60MM, ADAPTOR FLAT,
 WITH FUSE MONITORING,
 SIGUT BOX TERMINAL BOTTOM FUSE SIZE NH00

Similar to image

General technical details:

Continuous current / rated value	A	160
Operating current / at AC-21 / rated value	A	160
Operating voltage		
• for DC / rated value	V	220
• at 50/60 Hz / for AC / rated value	V	690
type of voltage		AC/DC
Number of poles		3
Number of NC contacts / for auxiliary contacts		0
Number of NO contacts / for auxiliary contacts		0
Number of change-over switches / for auxiliary contacts		0
Acceptability for application		
• emergency stop switch		No
• safety cut-out switch		Yes
Active power loss / maximum	W	10
Breaking capacity limit short-circuit current (Icu) / at 400 V / rated value	kA	0.8
Item designation		
• according to DIN EN 61346-2		Q

- according to DIN 40719 extendable after IEC 204-2 / according to IEC 750

Q

Mechanical design:

Design of the load switch

- Strip form

No

Type of mounting

busbar mounting

Design of the electrical connection

- for main current circuit

box terminals

Fuse system

LV HRC fuse

Installation size of fuse-link

00 and 000

Installation size of disconnecting link

0

Center line spacing

mm 60

Width

mm 108

Height

mm 187.5

Depth

mm 130

Ambient conditions:

Ambient temperature

- during storage
- during operating

°C -50 ... +80

°C -25 ... +55

Protection class IP

IP00

Certificates/approvals:

General Product Approval



Declaration of Conformity

Test Certificates

[Special Test Certificate](#)

other

[Confirmation](#)

[Declaration of Conformity](#)

[other](#)

Further information:

Information- and Downloadcenter (Catalogs, Brochures,...)

<http://www.siemens.com/lowvoltage/catalogs>

Industry Mall (Online ordering system)

<http://www.siemens.com/lowvoltage/mall>

Service&Support (Manuals, Certificates, Characteristics, FAQs,...)

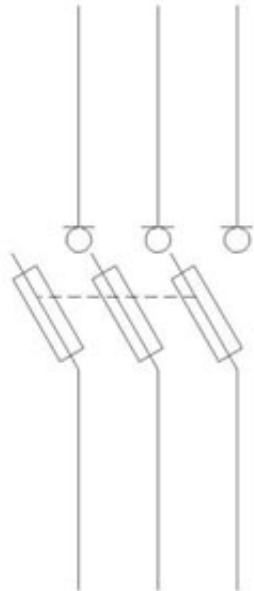
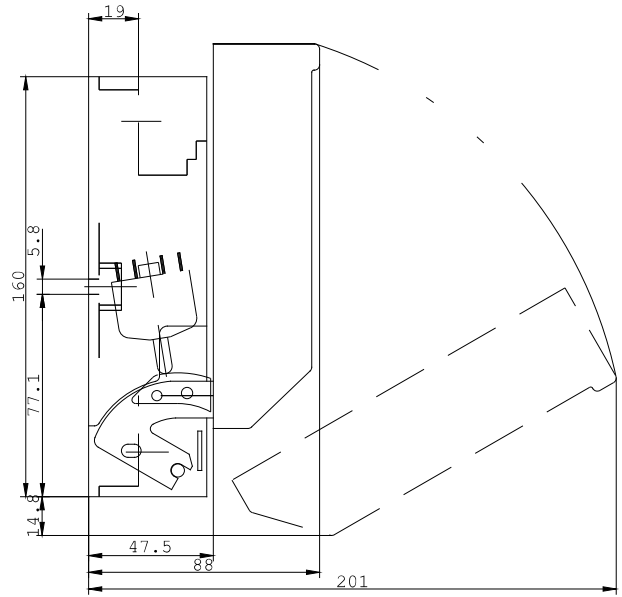
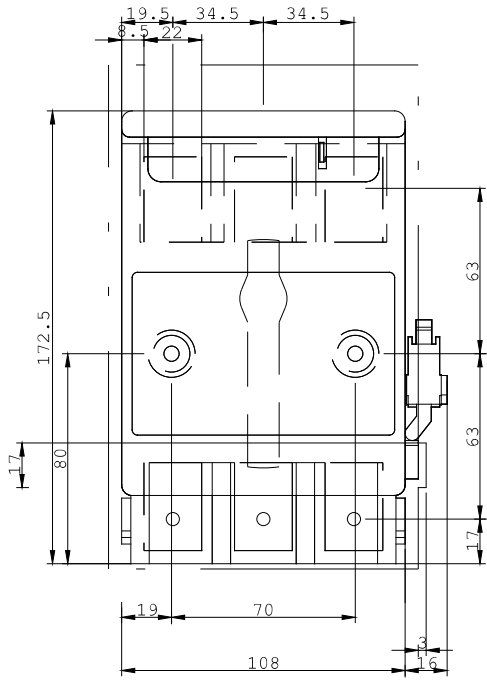
<http://support.automation.siemens.com/WW/view/en/3NP4076-1FJ01/all>

Image database (product images, 2D dimension drawings, 3D models, device circuit diagrams, ...)

http://www.automation.siemens.com/bilddb/cax_en.aspx?mlfb=3NP4076-1FJ01

CAX-Online-Generator

<http://www.siemens.com/cax>



last change:

Nov 2, 2012