



CONTACTOR RELAY, 4NO, AC 230V,  
50/60 HZ, SIZE S00, SCREW TERMINAL,  
OPTIMIZED MOUNTING (20G)

**General technical data:**

<b>product brand name</b>		SIRIUS
<b>Size of the contactor</b>		S00
<b>Identification number and letter for switching elements</b>		40 E
<b>Product extension / auxiliary switch</b>		Yes
<b>Protection class IP / on the front</b>		IP20
<b>Protection against electrical shock</b>		finger-safe
<b>Degree of pollution</b>		3
<b>Insulation voltage / with degree of pollution 3 / rated value</b>	V	690
<b>Installation altitude / at a height over sea level / maximum</b>	m	2,000
<b>Ambient temperature</b>		
• during storage	°C	-55 ... +80
• during operating	°C	-25 ... +60
<b>Shock resistance</b>		
• at rectangular impulse		
• at AC		7,3g / 5 ms, 4,7g / 10 ms
• at sine pulse		
• at AC		11,4g / 5 ms, 7,3g / 10 ms
<b>Impulse voltage resistance / rated value</b>	kV	6
<b>Mechanical operating cycles as operating time</b>		

• of the contactor / typical	30,000,000
• of the contactor with added auxiliary switch block / typical	10,000,000
• of the contactor with added electronics-compatible auxiliary switch block / typical	10,000,000

#### Control circuit:

<b>Type of voltage / of the controlled supply voltage</b>		AC
<b>Operating range factor control supply voltage rated value / of the magnet coil</b>		
• at 50 Hz / for AC		0.8 ... 1.1
• at 60 Hz / for AC		0.85 ... 1.1
<b>Apparent pull-in power / of the solenoid / for AC</b>	V·A	37
<b>Apparent holding power / of the solenoid / for AC</b>	V·A	5.7
<b>Inductive power factor</b>		
• with the pull-in power of the coil		0.8
• with the pull-in power of the coil		0.25
<b>Closing delay</b>		
• at AC	ms	8 ... 33
<b>Opening delay</b>		
• at AC	ms	6 ... 25
<b>Arcing time</b>	s	10 ... 15

#### Auxiliary circuit:

<b>Contact reliability / of the auxiliary contacts</b>		1 faulty switching per 100 million (17 V, 1 mA)
<b>Number of NO contacts / for auxiliary contacts / instantaneous switching</b>		4
<b>[nicht versorgt: PMD_ABP551_001_000]</b>		
•	A	2
• at 690 V	A	1
<b>[nicht versorgt: PMD_ABP553_001_000]</b>		
• [nicht versorgt: PMD_ABP553_001_000]		
•	A	10
•	A	3
•	A	1
• with 2 current paths in series / at DC-12		
• at 24 V / rated value	A	10
• at 60 V / rated value	A	10
• at 110 V / rated value	A	4
• at 220 V / rated value	A	2
• at 440 V / rated value	A	1.3
• at 600 V / rated value	A	0.65

<ul style="list-style-type: none"> <li>• with 3 current paths in series / at DC-12 <ul style="list-style-type: none"> <li>• at 24 V / rated value</li> <li>• at 60 V / rated value</li> <li>• at 110 V / rated value</li> <li>• at 220 V / rated value</li> <li>• at 440 V / rated value</li> <li>• at 600 V / rated value</li> </ul> </li> </ul>	A	10
	A	10
	A	10
	A	3.6
	A	2.5
	A	1.8
<b>Operating current</b>		
<ul style="list-style-type: none"> <li>• [nicht versorgt: PMD_ABP558_001_000] <ul style="list-style-type: none"> <li>•</li> <li>•</li> <li>•</li> </ul> </li> <li>• with 2 current paths in series / at DC-13 <ul style="list-style-type: none"> <li>• at 24 V / rated value</li> <li>• at 60 V / rated value</li> <li>• at 110 V / rated value</li> <li>• at 220 V / rated value</li> <li>• at 440 V / rated value</li> <li>• at 600 V / rated value</li> </ul> </li> <li>• with 3 current paths in series / at DC-13 <ul style="list-style-type: none"> <li>• at 24 V / rated value</li> <li>• at 60 V / rated value</li> <li>• at 110 V / rated value</li> <li>• at 220 V / rated value</li> <li>• at 440 V / rated value</li> <li>• at 600 V / rated value</li> </ul> </li> </ul>	A	10
	A	1
	A	0.3
	A	10
	A	3.5
	A	1.3
	A	0.9
	A	0.2
	A	0.1
	A	10
	A	4.7
	A	3
	A	1.2
	A	0.5
	A	0.26
<b>Off-load operating frequency</b>		
<ul style="list-style-type: none"> <li>• at AC</li> <li>• at DC</li> </ul>	1/h	10,000
	1/h	10,000
<b>Frequency of operation</b>		
<ul style="list-style-type: none"> <li>• at AC-12 / maximum</li> <li>• at AC-14 / maximum</li> <li>• at AC-15 / maximum</li> <li>• at DC-12 / maximum</li> <li>• at DC-13 / maximum</li> </ul>	1/h	1,000
	1/h	1,000
	1/h	1,000
	1/h	1,000
	1/h	1,000
	1/h	1,000
<b>Short-circuit:</b>		
<b>Design of the fuse link / for short-circuit protection of the auxiliary switch</b>		
<ul style="list-style-type: none"> <li>• required</li> </ul>		Fuse gL/gG: 10 A, miniature circuit breaker C 6 A (short-circuit current I <sub>k</sub> < 400 A)






### Installation/mounting/dimensions:

<b>mounting position</b>		+/-180° rotation possible on vertical mounting surface; can be tilted forward and backward by +/- 22.5° on vertical mounting surface
<b>Type of mounting</b>		screw and snap-on mounting onto 35 mm standard mounting rail
<b>Width</b>	mm	45
<b>Height</b>	mm	57.5
<b>Depth</b>	mm	73

### Connections:

<b>Design of the electrical connection</b> • for auxiliary and control current circuit		screw-type terminals
<b>Type of the connectable conductor cross-section</b> • for auxiliary contacts • solid • finely stranded • with conductor end processing • for AWG conductors / for auxiliary contacts		2x (0.5 ... 1.5 mm <sup>2</sup> ), 2x (0.75 ... 2.5 mm <sup>2</sup> ), 2x 4 mm <sup>2</sup>  2x (0.5 ... 1.5 mm <sup>2</sup> ), 2x (0.75 ... 2.5 mm <sup>2</sup> )  2x (20 ... 16), 2x (18 ... 14), 2x 12

### Certificates/approvals:

<b>General Product Approval</b>	<b>Functional Safety / Safety of Machinery</b>	<b>Declaration of Conformity</b>
 CCC	 UL	 EG-Konf.
 CSA	 GOST	<a href="#">Type Examination</a>

### Test Certificates

[Special Test Certificate](#)

### Shipping Approval



### Shipping Approval

other



### UL/CSA ratings:

<b>Contact rating designation / for auxiliary contacts / according to UL</b>		A600 / Q600
--	--	-------------

## Sicherheitsrelevante Kenngrößen:

<b>B10 value / with high demand rate</b> <ul style="list-style-type: none"> <li>• according to SN 31920</li> <li>• note</li> </ul>		1,000,000 With 0.3 x Ie
<b>T1 value / for proof test interval or service life</b> <ul style="list-style-type: none"> <li>• according to IEC 61508</li> </ul>	a	20
<b>Proportion of dangerous failures</b> <ul style="list-style-type: none"> <li>• with low demand rate / according to SN 31920</li> <li>• with high demand rate / according to SN 31920</li> </ul>	% %	40 73
<b>Failure rate (FIT value) / with low demand rate</b> <ul style="list-style-type: none"> <li>• according to SN 31920</li> </ul>	FIT	100
<b>Product function / positively driven operation to IEC 60947-5-1</b> <ul style="list-style-type: none"> <li>• comment</li> </ul>		Yes with 3RH29

## Further information:

### Information- and Downloadcenter (Catalogs, Brochures,...)

<http://www.siemens.com/industrial-controls/catalogs>

### Industry Mall (Online ordering system)

<http://www.siemens.com/industrial-controls/mall>

### Cax online generator:

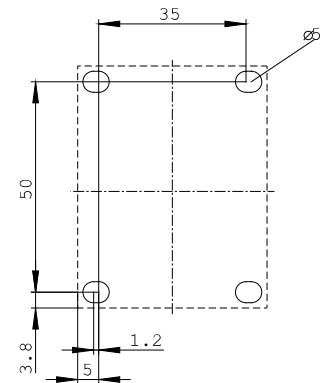
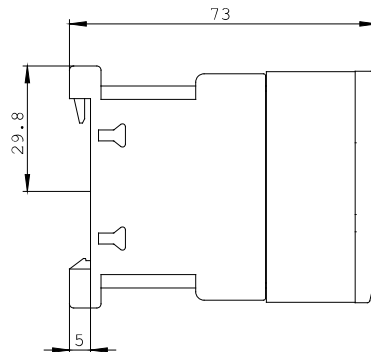
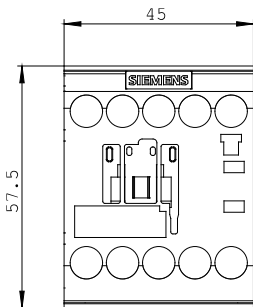
<http://www.siemens.com/cax>

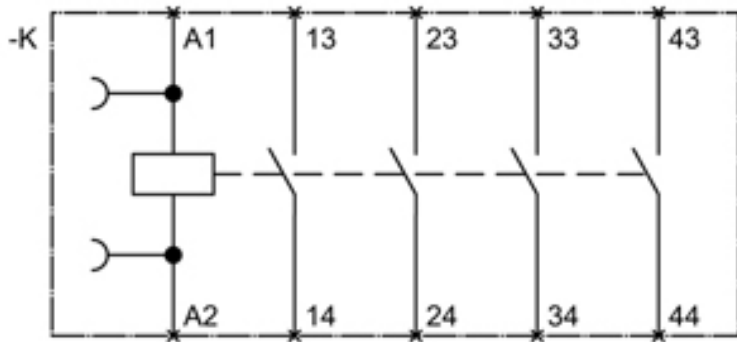
### Service&Support (Manuals, Certificates, Characteristics, FAQs,...)

<http://support.automation.siemens.com/WW/view/en/3RH2140-1AP00-0AA6/all>

### Image database (product images, 2D dimension drawings, 3D models, device circuit diagrams, ...)

[http://www.automation.siemens.com/bilddb/cax\\_en.aspx?mlfb=3RH2140-1AP00-0AA6](http://www.automation.siemens.com/bilddb/cax_en.aspx?mlfb=3RH2140-1AP00-0AA6)





last change:

Feb 15, 2013