



CIRCUIT-BREAKER SZ S00,
FOR MOTOR PROTECTION, CLASS 10,
A-REL.0.35...0.5A,N-REL. 6.5A SPRING-L. CONNECTION
STANDARD SWITCHING CAPACITY REUSABLE
PACKING,
PACKAGE = 34 UNITS

General technical data:

| | | |
|--|----|----------------------|
| product brand name | | SIRIUS |
| product designation | | 3RV2 circuit breaker |
| Size of the circuit-breaker | | S00 |
| Number of poles / for main current circuit | | 3 |
| Product function | | |
| • removable terminal for auxiliary and control circuit | | No |
| • overload protection | | Yes |
| • phase disturbance recognition | | Yes |
| • short-circuit to earth recognition | | No |
| Product component | | |
| • auxiliary switch | | No |
| • undervoltage release mechanism | | No |
| • trip indicator | | No |
| Product extension | | |
| • auxiliary switch | | Yes |
| • optional / motor drive | | No |
| Impulse voltage resistance / rated value | kV | 6 |
| Protection class IP / on the front | | IP20 |
| Protection against electrical shock | | finger-safe |

| | | |
|---|----|-------------|
| Installation altitude / at a height over sea level / maximum | m | 2,000 |
| Resistance against shock | | 25g / 11 ms |
| Ambient temperature | | |
| • during transport | °C | -50 ... +80 |
| • during storage | °C | -50 ... +80 |
| • during operating | °C | -20 ... +60 |
| Active power loss / total / typical | W | 4.9 |

Main circuit:

| | | |
|---|-----|---------|
| Operating voltage / rated value | V | 690 |
| Service power / at AC-3 | | |
| • at 400 V / rated value | W | 120 |
| • at 500 V / rated value | W | 120 |
| • at 690 V / rated value | W | 180 |
| Operational current / at AC-3 / at 400 V / rated value | A | 0.5 |
| Mechanical operating cycles as operating time / of the main contacts / typical | | 100,000 |
| Frequency of operation / at AC-3 / according to IEC 60947-6-2 | 1/h | 15 |

Auxiliary circuit:

| | | |
|--|--|---------|
| Number of change-over switches / for auxiliary contacts | | 0 |
| Mechanical operating cycles as operating time / of the auxiliary contacts / typical | | 100,000 |

Protection function:

| | | |
|--|---|--------------|
| Trip class | | CLASS 10 |
| Adjustable response current / of the current-dependent overload release | A | 0.35 ... 0.5 |
| Breaking capacity limit short-circuit current (Icu) | | |
| • at 400 V / rated value | A | 100,000 |
| • at 500 V / rated value | A | 100,000 |
| • at 690 V / rated value | A | 100,000 |

Safety:

| | | |
|--|-----|--------|
| Proportion of dangerous failures | | |
| • with high demand rate / according to SN 31920 | % | 40 |
| • with low demand rate / according to SN 31920 | % | 40 |
| Failure rate (FIT value) / with low demand rate / according to SN 31920 | FIT | 50 |
| B10 value / with high demand rate / according to SN 31920 | | 50,000 |
| T1 value / for proof test interval or service life / according to IEC 61508 | a | 10 |

Installation/mounting/dimensions:

| | | |
|-------------------|----|--|
| Type of mounting | | screw and snap-on mounting onto 35 mm standard mounting rail according to DIN EN 60715 |
| mounting position | | any |
| Depth | mm | 96 |
| Height | mm | 109 |
| Width | mm | 45 |

Connections:

| | | |
|---|--|---|
| Arrangement of electrical connectors / for main current circuit | | Top and bottom |
| Design of the electrical connection <ul style="list-style-type: none"> • for main current circuit | | spring-loaded terminals |
| Type of the connectable conductor cross-section <ul style="list-style-type: none"> • for main contacts <ul style="list-style-type: none"> • solid • finely stranded <ul style="list-style-type: none"> • without conductor final cutting • with conductor end processing • for AWG conductors / for main contacts | | 2x (0.5 ... 4 mm ²) 2x (0.5 ... 2.5 mm ²) 2x (0.5 ... 2.5 mm ²) 2x (20 ... 12) |

Certificates/approvals:

| | | |
|--------------------------|--------------------------------|---------------------------|
| General Product Approval | For use in hazardous locations | Declaration of Conformity |
|--------------------------|--------------------------------|---------------------------|



Test Certificates

[other](#)

[Special Test Certificate](#)

[Type Test Certificates/Test Report](#)

Shipping Approval



Shipping Approval

other



[other](#)

Further information:

Information- and Downloadcenter (Catalogs, Brochures,...)

<http://www.siemens.com/industrial-controls/catalogs>

Industry Mall (Online ordering system)

<http://www.siemens.com/industrial-controls/mall>

Cax online generator:

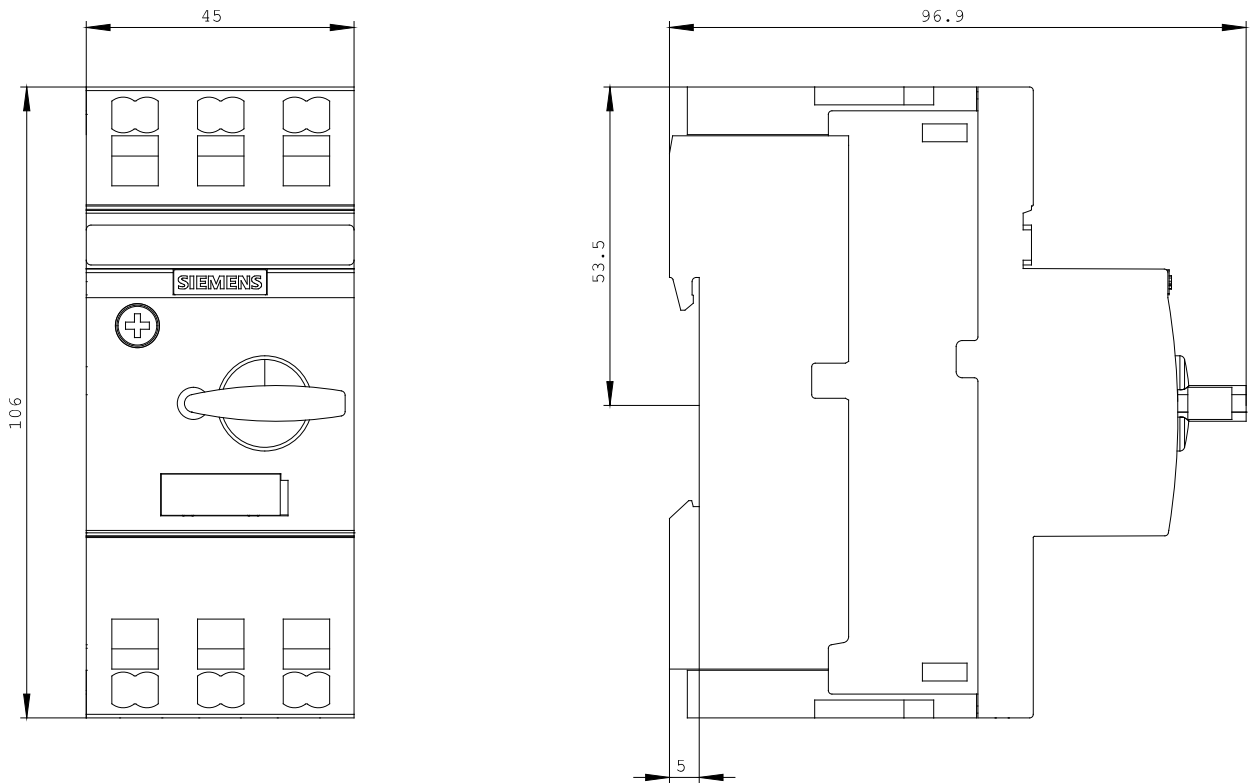
<http://www.siemens.com/cax>

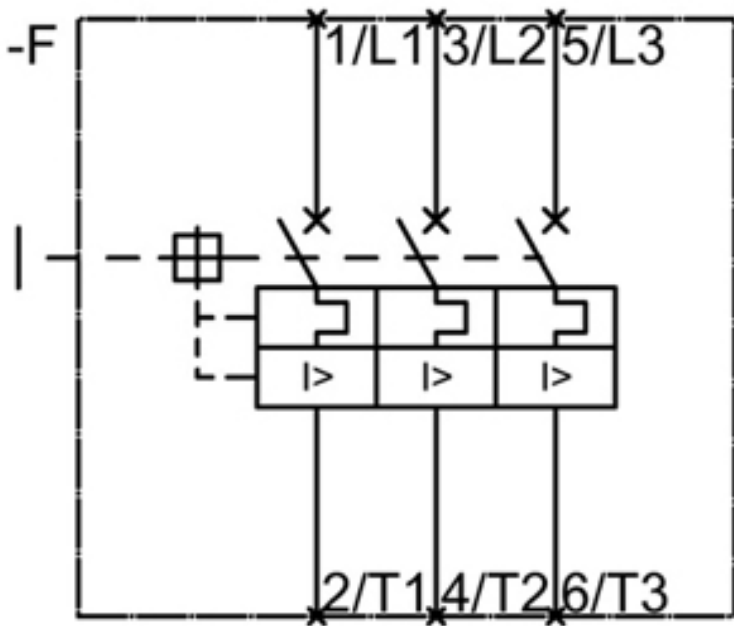
Service&Support (Manuals, Certificates, Characteristics, FAQs,...)

<http://support.automation.siemens.com/WW/view/en/3RV2011-0FA20-ZX95/all>

Image database (product images, 2D dimension drawings, 3D models, device circuit diagrams, ...)

http://www.automation.siemens.com/bilddb/cax_en.aspx?mlfb=3RV2011-0FA20-ZX95





last change:

Feb 14, 2013