

SINGLE-POLE ELECTRODE FOR LATERAL  
INSTALLATION FOR LEVEL MONITORING,  
MECHAN. STABLE VERSION



<b>Product function</b>	Probe for level monitoring
-------------------------	----------------------------

**Measuring circuit:**

<b>Operating pressure / maximum</b>	bar	10
-------------------------------------	-----	----

**Certificates/approvals:**

**General Product Approval**



**Further information:**

**Information- and Downloadcenter (Catalogs, Brochures,...)**  
<http://www.siemens.com/industrial-controls/catalogs>

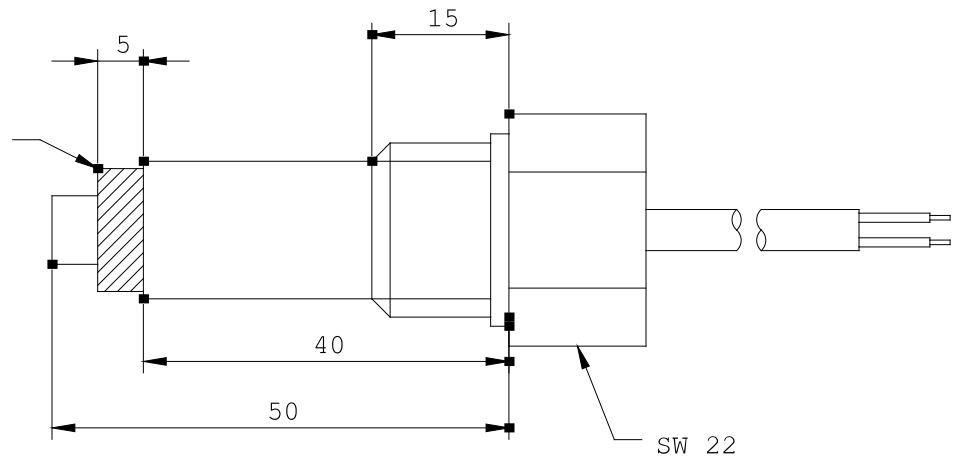
**Industry Mall (Online ordering system)**  
<http://www.siemens.com/industrial-controls/mall>

**Cax online generator:**  
<http://www.siemens.com/cax>

**Service&Support (Manuals, Certificates, Characteristics, FAQs,...)**  
<http://support.automation.siemens.com/WW/view/en/3UG3207-1C/all>

**Image database (product images, 2D dimension drawings, 3D models, device circuit diagrams, ...)**  
[http://www.automation.siemens.com/bilddb/cax\\_en.aspx?mlfb=3UG3207-1C](http://www.automation.siemens.com/bilddb/cax_en.aspx?mlfb=3UG3207-1C)

olierung



last change:

Feb 18,  
2013