



CIRCUIT-BREAKER VL 630N STANDARD BREAKING
CAPACITY ICU= 55KA,
415V AC 4 POLE,
LINE PROTECTION OVERCURRENT RELEASE TM,
LI IN= 630A,
RATED CURRENT IR= 500...630A,
OVERLOAD II= 3150...6300A,
SHORT-CIRCUIT N PROTECTED (100%)

Similar to image

Further information:

Information- and Downloadcenter (Catalogs, Brochures,...)

<http://www.siemens.com/lowvoltage/catalogs>

Global Industry Mall (Online ordering system)

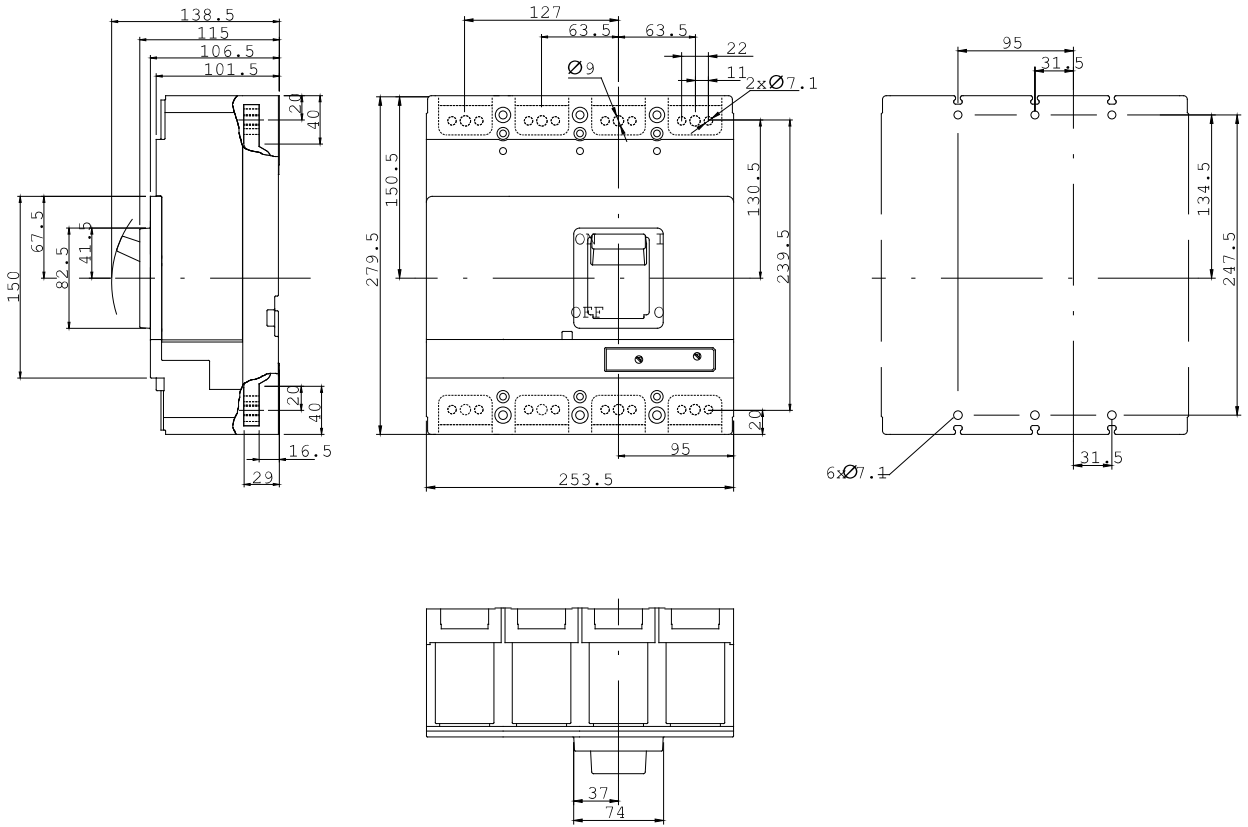
<http://www.siemens.com/lowvoltage/mall>

Service&Support (Manuals, Certificates, Characteristics, FAQs,...)

<http://support.automation.siemens.com/WW/view/en/3VL5763-1EM46-..../all>

Image database (product images, 2D dimension drawings, 3D models, device circuit diagrams, ...)

http://www.automation.siemens.com/bilddb/cax_en.aspx?mlfb=3VL5763-1EM46-....



last change:

Feb 8, 2013