



CIRCUIT-BREAKER VL 630H HIGH BREAKING CAPACITY  
ICU=70KA / 415 V AC 3 POLE,  
NON-AUTOMATIC OVERCURRENT RELEASE MAGNETIC  
IN=630A,  
RATED CURRENT II=6300A, SHORT CIRCUIT

Similar to image

#### Further information:

**Information- and Downloadcenter (Catalogs, Brochures,...)**

<http://www.siemens.com/lowvoltage/catalogs>

**Global Industry Mall (Online ordering system)**

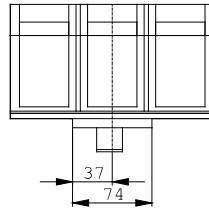
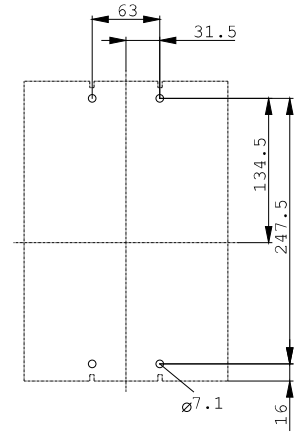
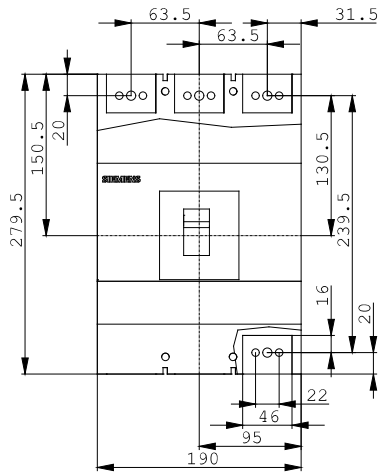
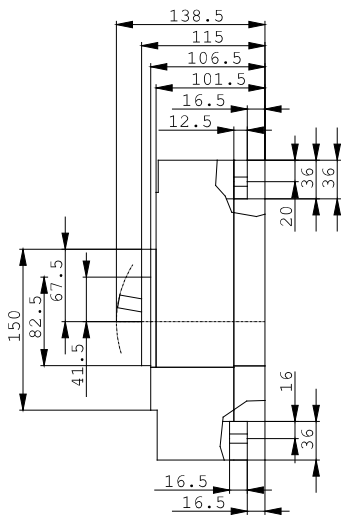
<http://www.siemens.com/lowvoltage/mall>

**Service&Support (Manuals, Certificates, Characteristics, FAQs,...)**

<http://support.automation.siemens.com/WWW/view/en/3VL5763-2DE36-..../all>

**Image database (product images, 2D dimension drawings, 3D models, device circuit diagrams, ...)**

[http://www.automation.siemens.com/bilddb/cax\\_en.aspx?mlfb=3VL5763-2DE36-....](http://www.automation.siemens.com/bilddb/cax_en.aspx?mlfb=3VL5763-2DE36-....)



last change:

Feb 8, 2013